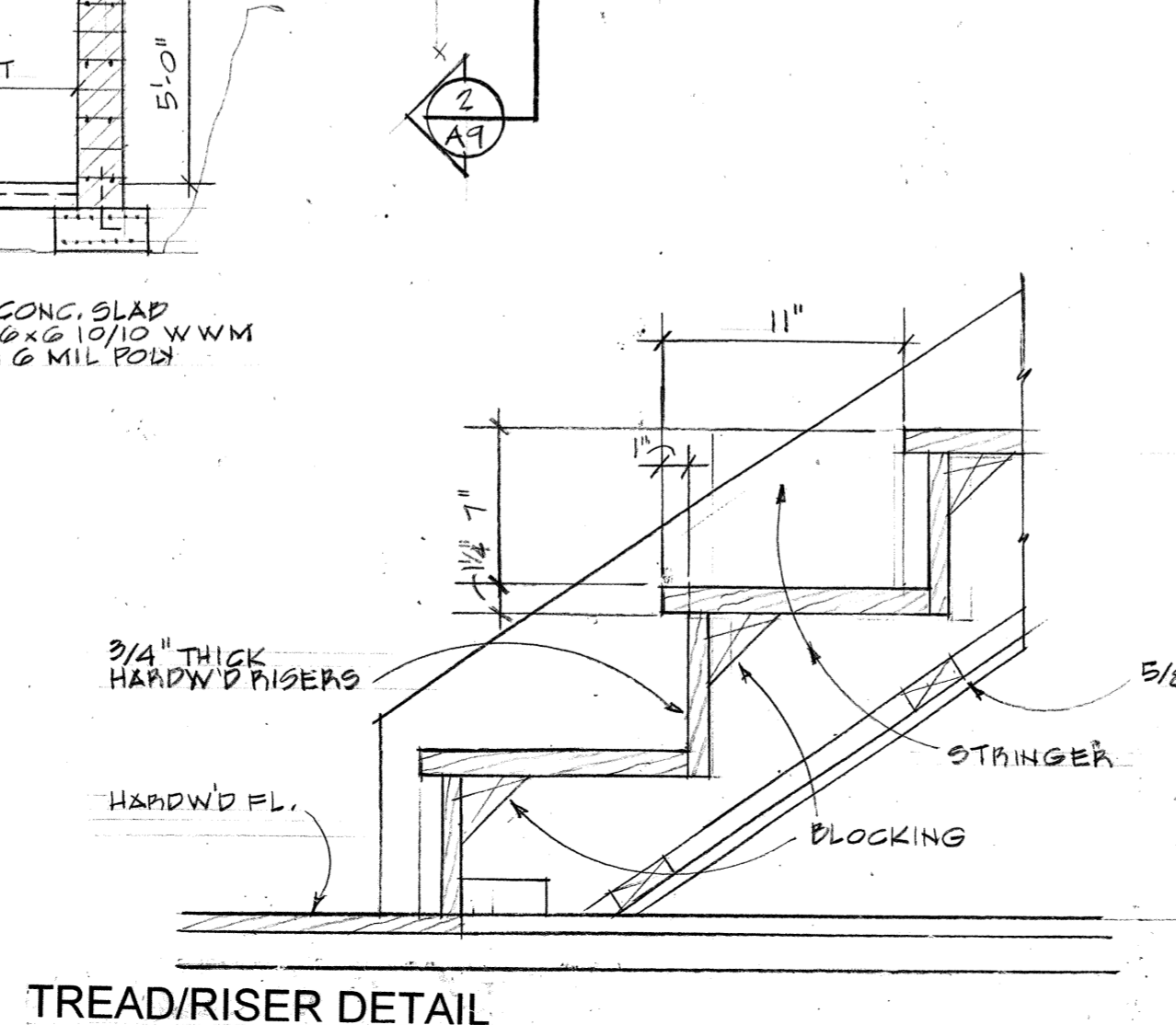
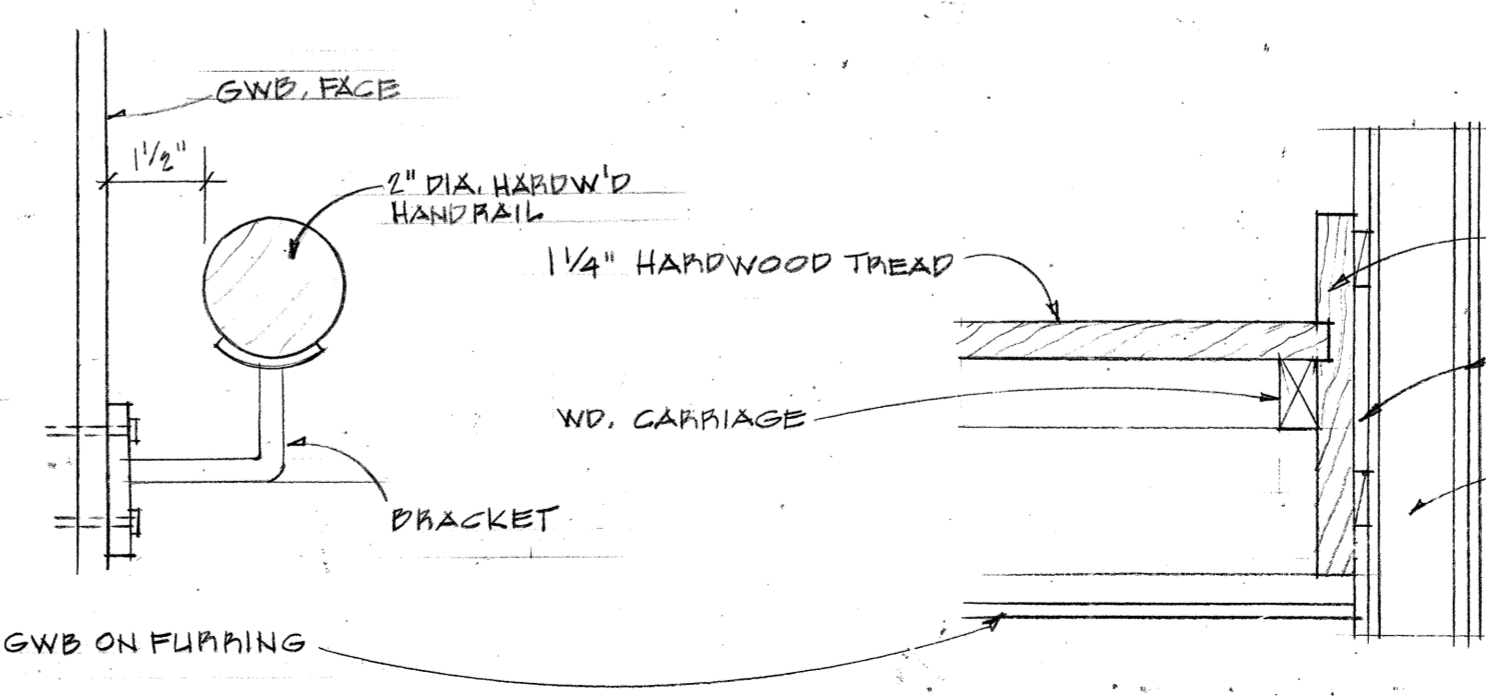


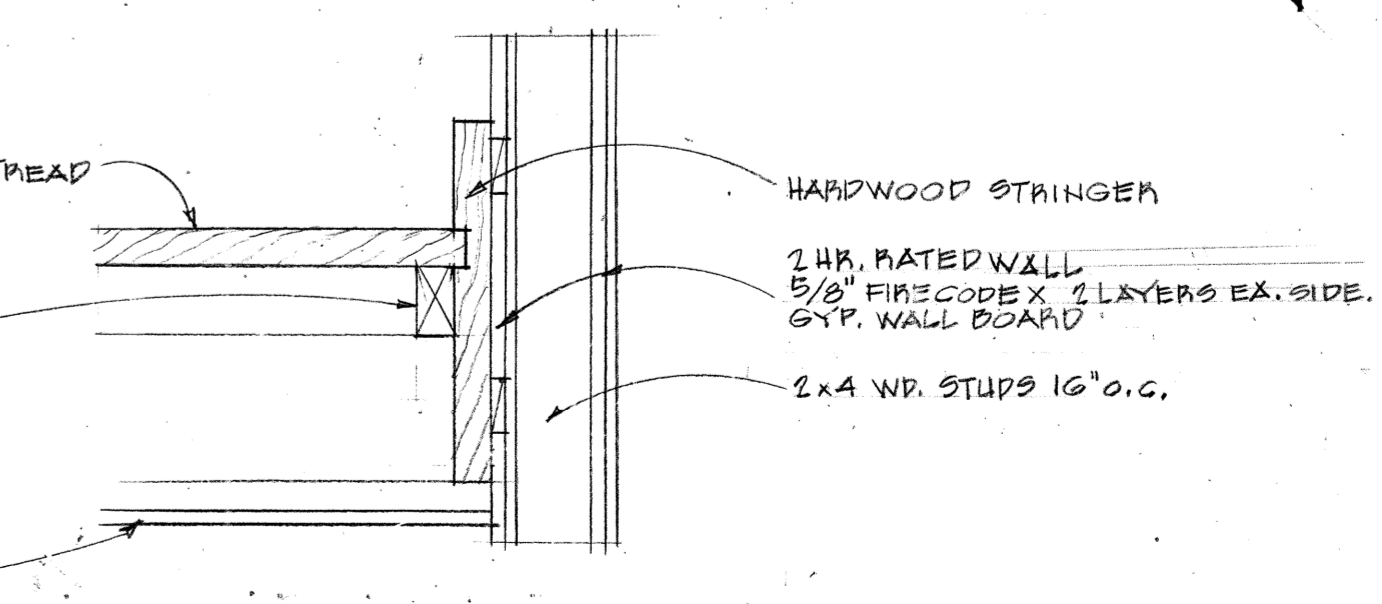
1 EAST/WEST BUILDING SECTION
SCALE 1/4"=1'-0"



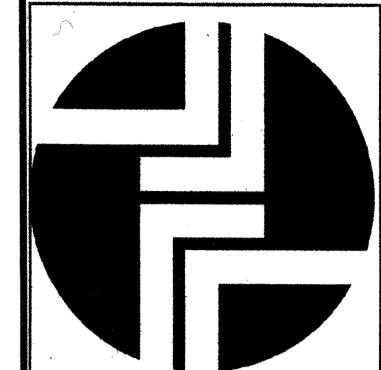
TREAD/RISER DETAIL



HANDRAIL DETAIL

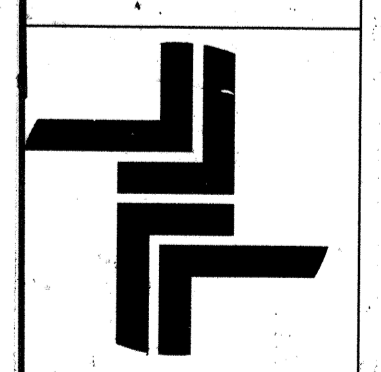


TREAD/RISER DETAIL



bruce jackson architects
STUDIO: 413 NORTH SECOND STREET, SUITE 125, MILWAUKEE, WISCONSIN
414.347.0477

ARTASIA GALLERY
PROPOSED RENOVATION OF ARTASIA GALLERY BUILDING
101 E. WASHINGTON, MILWAUKEE COUNTY, CITY OF MILWAUKEE, WI.



A7